

November 2023 Newsletter

Changes to Nursery Opening Hours

Due to declining child numbers during the later afternoon sessions, we have taken the decision to reduce the nursery opening hours with effect from January 2024.

Please see below our new opening hours from 2 January 2024.

Monday	07:45 till 17:30
Tuesday	07:45 till 17:30
Wednesday	07:45 till 17:30
Thursday	07:45 till 18:00
Friday	07:45 till 17:00

This means that the only day we will be staying open until 18:00 is Thursday.

We apologise for any inconvenience this will cause but it is not financially viable for us to remain open until 18:00 when we only have a couple of children attending.

Change to Charging Hours

Since Daisychains opened we have allowed parents to drop off children from 07:45am but have only charged fees from 08:00am. Unfortunately, due to the increased financial pressures with effect from 1 March 2024 we will be charging full fees from open till close. Therefore, if your child attends from 07:45am you will be charged an additional 15mins per booked day, to cover the period from 07:45am till 08:00am.

We would also like to give advance warning that we are looking at how the government funded hours are allocated and may change this from September 2024. At the moment we allow funding to be applied to all term time sessions but may need to restrict this to just core sessions or specified hours. We will provide further information as soon as we have made our final decision.

Appropriate Clothing

At the nursery we encourage the children to play outside in all weathers and we kindly request that you ensure your child has appropriate clothing. Even our babies are taken out for walks whenever possible so please ensure that they have a pair of shoes and a coat to put on.



As the weather changes and the temperatures start to drop, please make sure your child has a jumper/cardigan, coat, hat, scarf and gloves at the nursery. On wet days wellington boots can be useful but please ensure your child also has a change of footwear to wear in the room. A spare set of clothes including socks is also helpful so we can change your child if they get wet during the day.



Dates for your diary

Children In Need

Friday 17 November - All children are welcome to wear their pyjamas or favourite dressing up outfit to nursery. If you are able to make a small donation for Children In Need it would be appreciated.



Christmas Festivities

Thursday 7 December - Christmas Jumper Day



All children are invited to wear a Christmas Jumper to nursery. If you are able to make a small donation for Save the Children it would be appreciated.



Christmas Parties

Daisy Room will be holding their Christmas Party on **Wednesday 13 December**. Daisy Room children that do not normally attend on a Wednesday are invited to come into nursery at 10:30 to join in the fun. Daisy Room children who do not normally attend on a Wednesday afternoon are invited to stay to join in the party. As the party will take place over the lunch period the children will **not require a packed lunch** as they will be having party food.



Parents of children in Daisy Room are invited to come into nursery at **14:30 on Wednesday 13 December** to join the children in a Christmas Sing A Long.

Blossom and Buttercup Room will be celebrating throughout the week commencing Monday 11 December with festive goodies for snack.

Please note that there will be no school meals available for nursery children on **Wednesday 13 December** so all children in Blossom and Buttercup Rooms will need to bring in a packed lunch.



Donation Request

If you would like to make a donation towards the Christmas festivities it would be greatly appreciated. We will put up a list of requested items such as party rings, mini sausages or sausage rolls, cheesy biscuits etc, if you would like to donate any of these items please write your child's name on the list next to the item you will be bringing in. Please be advised that we can only accept **sealed shop bought food items** and these can be handed in anytime from the beginning of December. If you would prefer to make a monetary donation this can be handed in at any time.

Term Dates

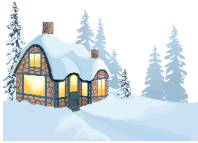
The last day of the current term is Friday 15 December 2023.

The nursery will close to full time children at 12 noon on Friday 22 December 2023. The nursery will reopen at 07:45 on Tuesday 2 January for full time children only.

The first day of the new term is Friday 5 January 2024 but as this is a staff training day the nursery will be closed to all children so term time children will not return until Monday 8 January 2024.

Please note that there will be **no school meals available for nursery children during the holiday period Monday 18 December to Friday 5 January 2024.**

Snow Policy



In the event of bad weather please listen to local radio or look online at KCC School Closures. If St George's CE Primary School is closed the nursery will also be closed.

Christmas Gifts

We know that due to the cost-of-living increases, finances are still being stretched in all directions this year. We really appreciate the gifts we receive from parents and children but understand how expensive it can be to purchase these gifts. Therefore, to help ease the pressure for everyone, if you would prefer to make a small donation to the nursery rather than purchasing individual staff gifts we would be extremely grateful.

Child Sickness

Winter can often see an increase in coughs and colds in both children and adults. We would like to remind you that if your child requires Calpol or any other over the counter medication to get through the day, they need to stay at home where they can rest and recover.

We would also like to remind you that in accordance with Guidance on Infection Control in Schools and Other Childcare Settings, if your child suffers from diarrhoea or vomiting, they need to stay away from nursery for 48 hours from the last episode. If your child has been sent home with sickness and/or diarrhoea, they will not be allowed to return to the nursery for at least 48 hours.

Your child's belongings

Please help us to look after your child's belongings by ensuring that everything is clearly named.

Easy2Name Labels supply a range of labels to suit every need. The labels are steriliser and dishwasher proof, and you can choose from stick on or iron on labels.

In addition, all orders placed using our unique organisation code will generate funds for the nursery. Our unique code is **FR-DAISYCHAINS-90**.



It is your responsibility to check that you have all your child's belongings at the end of the day.

Free Childcare

We are aware that in the last budget the Chancellor announced the introduction of free childcare for 1- and 2-year-olds. We do not have any further information on this other than that which has been published in the press. As soon as the details have been finalised and passed to the nursery, we will send out the relevant information to parents.

At the moment the government funding remains as follows:-

Some children are eligible for 15 hours government funding from the age of 2. If you believe you may be eligible for funding for your 2 year old, you can apply online via the KCC website - <https://www.kent.gov.uk/education-and-children/childcare-and-pre-school/free-childcare#tab-1>



All 3- and 4-year-olds in England are eligible for free childcare up to a maximum of 15 hours per week for 38 weeks per year from the **term after their 3rd birthday**. This funding is applied automatically.



In addition, some 3 and 4 year olds are eligible for extended funding of up to 30 hours per week for 38 weeks per year depending on parental circumstances (15 universal hours and up to 15 hours extended funding).

Applications for extended funding needs to be confirmed via HMRC and can be applied for via the following websites:

<https://www.kent.gov.uk/education-and-children/childcare-and-pre-school/free-childcare#tab-2>

<https://www.gov.uk/30-hours-free-childcare>

Daisychains Nursery will require your funding code (for 30hrs funding and/or Free For 2 funding), before the start of the term in which funding starts so please ensure you apply in plenty of time.

If you fail to apply by the appropriate deadline and/or fail to validate your claim by the required deadlines, the start date for your child's funding may be delayed or your child's funding may be cancelled.